



DINAIR®

QUICK START GUIDE

Quick Start Videos ▶

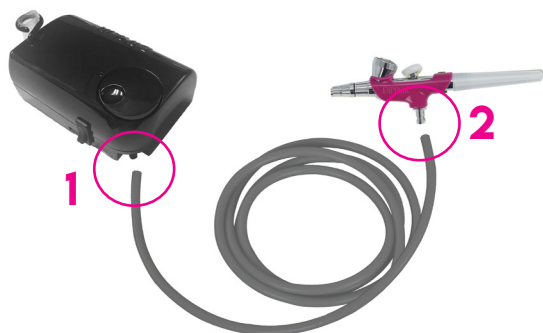
<http://www.AirbrushMakeup.com/Howto/Dvd/>

1 ONE SPEED COMPRESSOR & AIRBRUSH



*Color Varies

2 ATTACH AIR HOSE



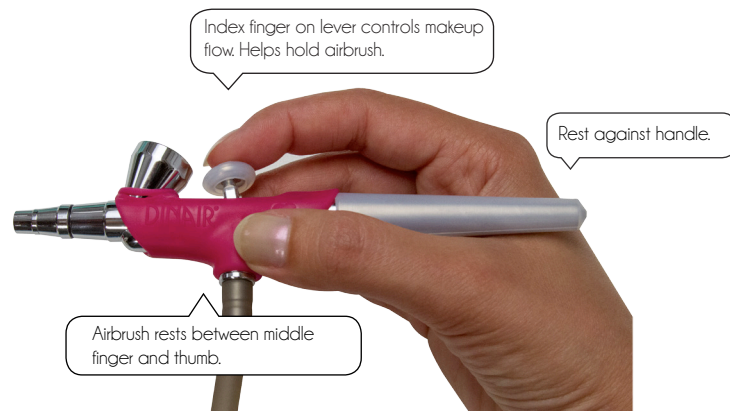
Start by taking the hose and connecting one end to the side of the compressor. Next, take your airbrush and connect the other side of the hose to the bottom of it. There is no need to twist the hose, simply push it onto the bottom of the airbrush until it is securely fastened. Now the airbrush is ready!

3 ONE SPEED COMPRESSOR

On/Off Switch On Back.



4 FINGER POSITIONS



Hold the airbrush as you would hold a beautiful pen, with a gentle grip and fingers extended. Find a comfortable grip and place your index finger on the lever. Use your index finger to gently pull back on the lever.

DRAPE HOSE OVER YOUR ARM

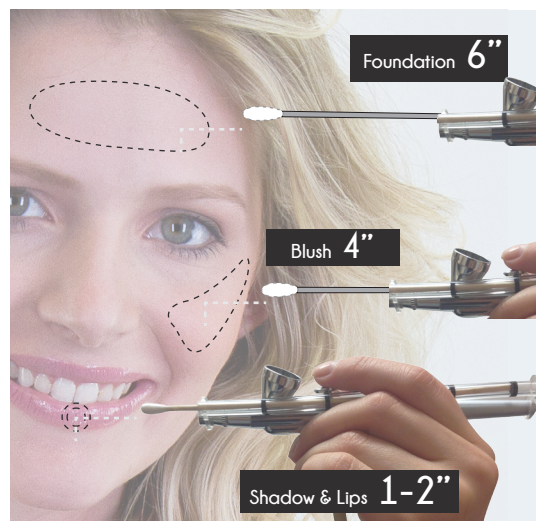
5 LEVER CONTROLS MAKEUP



PRACTICE WITH WATER BEFORE TRYING MAKEUP!

Adjusting the lever regulates the release of liquid into the air stream. Practice adjusting the lever back and forth to slightly release small amounts of coverage. You get the best result when it barely feels cool against your skin.

6 DISTANCE CONTROLS BRUSHING SIZE



The Distance Guide will help you to rehearse **holding the tip of the airbrush the correct distance from the face.** It adjusts from about 1" out to 5".

IMPROVE YOUR SKILL

MISTAKES EVAPORATE WHEN PRACTICING WITH WATER!

Improve your skills and practice your techniques by always using water before makeup.



Put a few drops of water into the makeup cup. This is where you will, in a short time, be adding and even mixing makeup colors. Use water first to practice, then try makeup and continue to practice.

7 OPEN SAFETY SEAL



OPEN SEAL WITH PIN

When opening your bottles for the first time, do not remove cap or seal. Instead, use a safety pin to make a small hole in the safety seal.

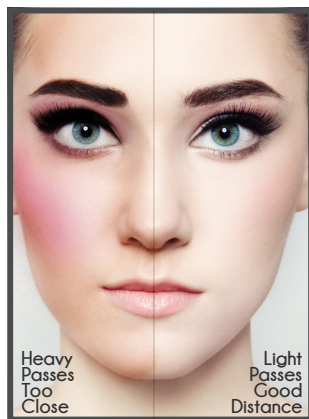


HOLD UPRIGHT TO DISPENSE

Next, tip the bottle to a 90° angle, and gently squeeze the bottle. Make sure to close the cap and return the bottle to an upright position.

8 FOUNDATION

- Hold the airbrush like a pen.
- **Begin moving the airbrush**, in a circular, oval or linear motion, before you pull the lever back for makeup.
- Use your finger to gradually pull back on the lever in a slight see-saw motion, until you feel the cool mist gently touch your face.
- Lightly apply passes of makeup to desired area.



1. Neutralize partially.

2. Complete your coverage.

3. Larger pores may require primer.

<http://www.AirbrushMakeup.com/Lessons/Courses/>

9 AIRBRUSH HELP

Airbrush spraying poorly? Try this!

ALWAYS CLEAN AIRBRUSH BEFORE APPLYING MAKEUP AND IN BETWEEN APPLICATIONS FOR BEST SPRAY QUALITY.



PINCH IT!

Pinch tip with fingernails to remove dry makeup



BRUSH IT!

TOOTHBRUSH

Add cleaner to brush and vigorously brush airbrush tip to remove stubborn dried makeup

10 DEEP CLEAN FULLY ASSEMBLED AIRBRUSH

A clean airbrush is a happy airbrush! To ensure optimal airbrush performance ALWAYS clean and store properly using our cleaning caps. Keep your airbrushes capped when not in use to prevent or loosen dried makeup.

CLEAN AND CAP YOUR AIRBRUSH IN BETWEEN APPLICATIONS.



1

1) Place the lever holder between the makeup cup and lever. 2) Attach the cap to the hose barb and twist to wrap the two together.



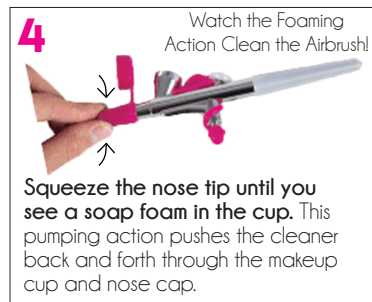
2

Push the nose cap on, up to the black cap line.



3

Put 5 - 10 drops of Dinair Airbrush Cleaner in the makeup cup.



4

Watch the Foaming Action Clean the Airbrush!

Squeeze the nose tip until you see a soap foam in the cup. This pumping action pushes the cleaner back and forth through the makeup cup and nose cap.



5

Put the cap on the makeup cup to continue cleaning. Be sure to clean, cap, and soak your airbrush between uses to keep it clean and ready.

http://www.AirbrushMakeup.com/Shop/Airbrush_Clean/

11 MAKEUP FAQ

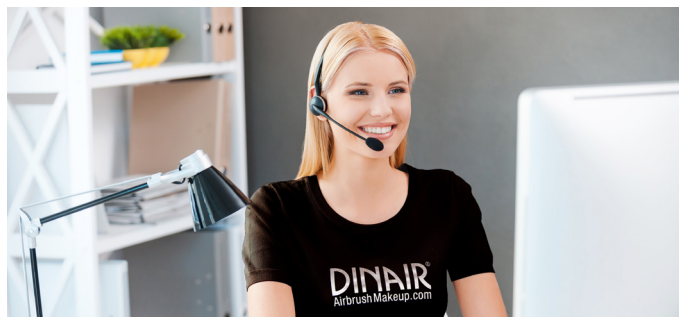
If the makeup seems to go very fast, it is a pretty good guess the makeup is being applied more heavily than recommended.

How many drops are being used for foundation?

We generally recommend between 3 and 6 drops. Repeat if needed.

What prep is needed? Depending on your skin type, you might try Line Filler, Shine Free, Skin Prep, Liquid Powder, Perfect Skin, or Sunscreen.

<http://www.AirbrushMakeup.com/Makeup/Foundations/>



More Questions?

Dinair's Award-Winning Customer Service Team can answer any and all of your questions, M-F, 8AM-5PM PST. SAT, 10AM-2PM PST.

Call or visit us online!

[AirbrushMakeup.com](http://www.AirbrushMakeup.com) | 800.785.4770 | Help@Dinair.com

Need Additional Tips, Tricks & Techniques?

Learn how to airbrush ANYTHING and EVERYTHING online! Hair, eyes, nails, and so much more!

Explore our Online Video Library and Online Courses:

<http://www.AirbrushMakeup.com/Howto/Media/Face/>

<http://www.AirbrushMakeup.com/Lessons/Courses/>